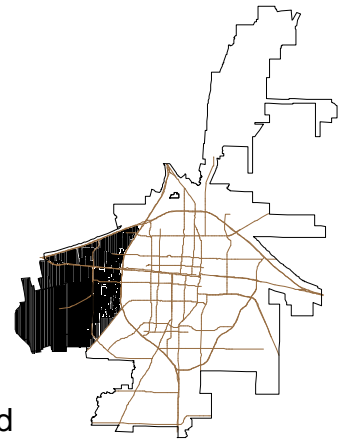


Super Neighborhood  
Planning Area

**Dyess AFB Area**



Boundary:

The Dyess AFB Area is located in the western portion of the city and is bounded by Interstate 20 on the north; Highway 83/84/277 on the East and the city limits on the South and west. It is comprised of Census tract 129, 130 and 131 in their entirety and part of 134. Major subdivisions in the area are

Public Facilities:

<i>Facility</i>	<i>Location</i>	<i>Facility</i>	<i>Location</i>
Dyess AFB	Hwys. 80 & 312	Elmwood Memorial Park	Hwy. 277
Dyess Elementary	Dyess AFB	St. Johns School	1600 Sherman Dr.
Reagan Elementary	5340 Hartford	Clack Middle School	1610 Corsicana
Scarborough Park	Hartford	Little Elm Cemetery	Chapel Hill Road

Neighborhood Organizations:

<i>Facility</i>	<i>Location</i>	<i>Facility</i>	<i>Location</i>

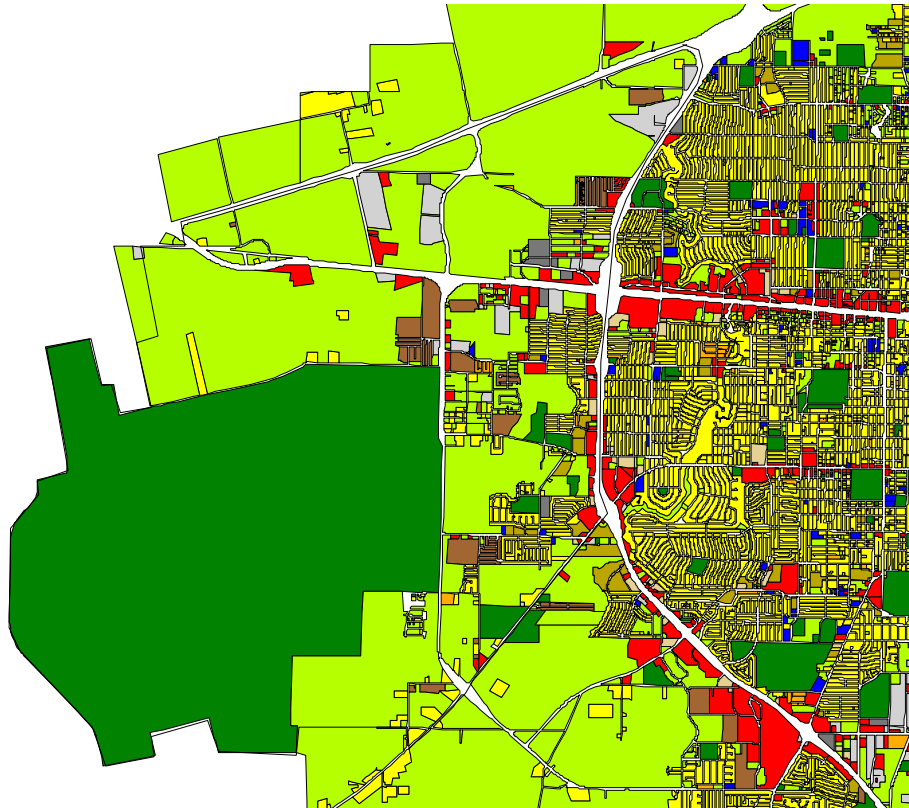
Existing Plans and Studies

<i>Name</i>	<i>Year</i>	<i>Name</i>	<i>Year</i>

	Neighborhood		City of Abilene	
<b>Population Characteristics</b>	<b>2000</b>	<b>%</b>	<b>2000</b>	<b>%</b>
Total Population	15395	100.00	115930	100.00
<b>Gender</b>				
Male	7739	50.27	58529	50.49
Female	7656	49.73	57401	49.51
<b>Age of Population</b>				
Under 5 years	1783	11.58	8283	7.14
5 – 14 years	2755	17.89	16043	13.84
15-24 years	3484	22.63	23115	19.94
25- 44 years	5058	32.85	33458	28.86
45 – 64 years	1861	12.09	21107	18.21
65 – 84 years	430	2.79	12100	10.44
85 years and over	24	0.16	1824	1.57
<b>Ethnicity</b>				
White	10476	68.05	90502	78.07
Black	2089	13.57	10215	8.81
American Indian/Alaska	59	0.38	642	0.55
Asian/ Native Haw. / Pac. Isl.	490	3.18	1624	1.40
Other	1533	9.96	10117	8.73
2 or more races	748	4.86	2830	2.44
Hispanic	2941	19.10	22548	19.45
<b>Household Income</b>				
Under \$15,000	868	17.55	8361	19.44
\$15,000 - \$24,999	938	18.97	7426	17.27
\$25,000 - \$34,999	1119	22.63	6654	15.47
\$35,000 - \$49,999	1094	22.12	8036	18.68
\$50,000 - \$74,999	675	13.65	6941	16.14
\$75,000 - \$99,999	164	3.32	2981	6.93
Over \$100,000	87	1.76	2616	6.08

	Neighborhood		City of Abilene	
	2000	%	2000	%
<b>Housing &amp; Households</b>				
Total Housing Units	5616	100.00	47302	100.00
Total Households	4945	100.00	43008	100.00
<b>Housing Tenure</b>				
Owner Occupied Units	1749	35.37	25579	54.08
Renter Occupied Units	3196	64.63	17429	36.85
<b>Year Built</b>				
1949 or earlier	246	4.38	7982	16.87
1950-1969	1889	33.64	18610	39.34
1970-1979	1496	26.64	7818	16.53
1980-1989	1303	23.20	8446	17.86
1990-2000	682	12.14	4447	9.40
<b>Educational Status (25years &amp; over)</b>				
No Diploma	1211	16.42	14398	21.02
High School Diploma	2129	28.88	18387	26.85
Some College	1884	25.55	14784	21.59
Assoc. or Bachelor Degree	1918	26.01	15678	22.89
Graduate Degree +	231	3.13	5242	7.65

# Land Use

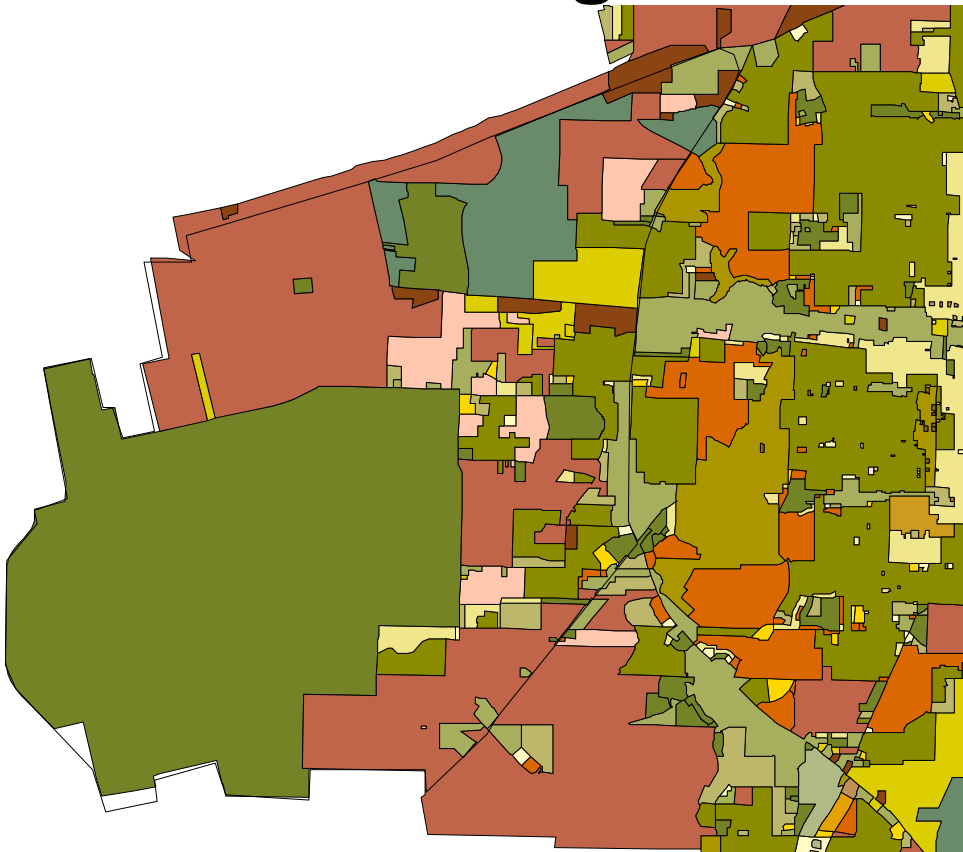


- △ Dyessbdry.shp
- Landuse.shp
- Single Family Res
- Two Family Res
- Multi Family
- Mobile Homes
- Public/Semi Public
- Office
- Commercial
- Heavy Com/Light Ind
- Industrial
- Churches
- Open Space/Undeveloped



	Neighborhood		City of Abilene	
	2000	%	2000	%
Employed persons 16 years and over	5585	100.00	49861	100.00
<b>Employment by Occupation</b>				
Management, professional, and related occupations	1265	22.65	16129	32.35
Service occupations	1443	25.84	9894	19.84
Sales and office occupations	1557	27.88	13398	26.87
Farming, fishing, and forestry occupations	13	0.23	154	0.31
Construction, extraction, and maintenance occupations	647	11.58	4905	9.84
Production, transportation, and metal moving occupations	660	11.82	5381	10.79
<b>Employment by Industry</b>				
Agriculture, forestry, fishing and hunting, and mining	54	0.97	788	1.58
Construction	285	5.10	3042	6.10
Manufacturing	340	6.09	2904	5.82
Wholesale trade	78	1.40	1201	2.41
Retail trade	865	15.49	6122	12.28
Transportation, warehousing and utilities	306	5.48	2636	5.29
Information	142	2.54	1138	2.28
FIRE	521	9.33	3389	6.79
Professional, scientific, management admin., and waste management.	225	4.03	3073	6.16
Educational, health and social services	1344	24.06	14303	28.69
Arts, entertainment, recreation, accommodation, and fast food	693	12.41	4651	9.33
Other services	305	5.46	3555	7.13
Public administration	427	7.65	3059	6.14

# Zoning



- △ Dyessbdry.shp
- Zoning.shp
- AO
- AO/COR
- AO/H
- CB
- CB/H
- CJ
- CJ/H
- GC
- GC/COR
- HC
- HC/COR
- HI
- HI/H
- Impact
- LC
- LC/COR
- LI
- LI/H
- MH
- MU
- O
- O/COR
- O/H
- PDD
- PDD/COR
- PI
- RM1
- RM2
- RM2/COR
- RM2/H
- RM2/PH
- RM3
- RM3/COR
- RM3/H
- RM3/MX
- RS12
- RS12/COR
- RS12/H
- RS6
- RS6/COR
- RS6/COR/PH
- RS6/H
- RS6/MX
- RS6/MX/PH
- RS6/PH
- RS8
- RS8/COR
- RS8/PH
- SC
- SC/COR

