



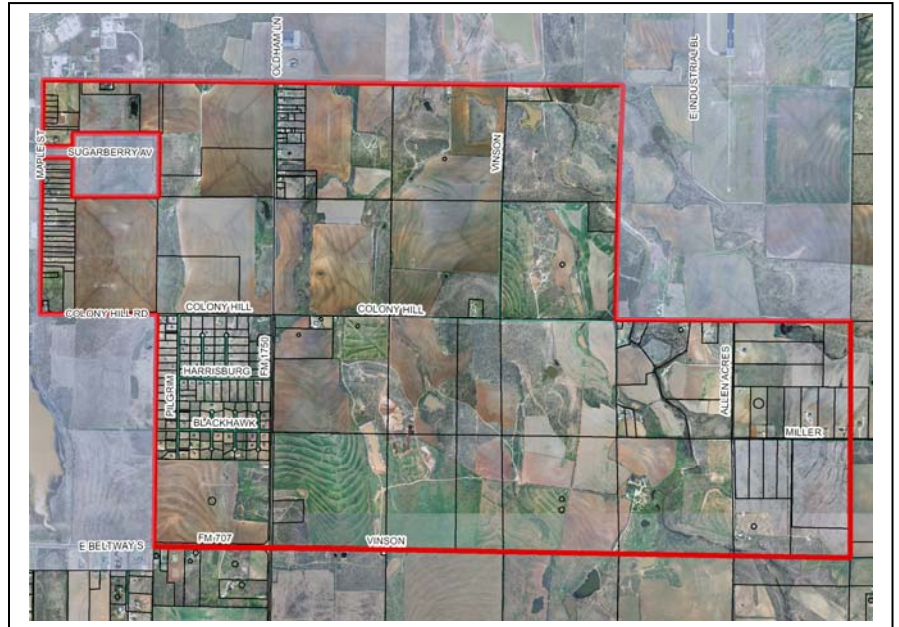
INVENTORY OF SERVICES CITY OF ABILENE THREE-YEAR ANNEXATION PLAN

CONTENTS:

- Area Description
- Overview
- Inventory of Services

Area Description:

The area encompasses approximately 3436 acres southeast of the current City of Abilene corporate limits. It is bounded on the north and west by the current city limits. The southern boundary is defined by FM 707, Vinson Road, and the southern boundary of the Eastern ½ of Survey No. 16 and Western ½ of Survey No. 17, Lunatic Asylum Lands, Taylor County, Texas. The eastern boundary is defined by the current city limits and the eastern boundary of the Western ½ of Survey No. 17, Lunatic Asylum Lands, Taylor County, Texas.



Overview:

Section 43.053 of the Texas Local Government Code requires cities to compile an inventory of services and facilities provided by public and private entities, directly or by contract, in each area included in a Municipal Annexation Plan. The inventory must include all services and facilities the city is required to provide or maintain following the annexation.

These services and facilities include:

- Police protection;
- Fire protection;
- Solid waste collection;
- Maintenance of (public) water and wastewater facilities that are not in the service area of another water or wastewater utility;
- Maintenance of (public) roads and streets, including road and street lighting;
- Maintenance of (public) parks, playgrounds, and swimming pools; and,
- Maintenance of any other publicly owned facility, building, or service

Cities are required to notify public and private service providers requesting information regarding the type and level of services they provide. If a service provider fails to submit the required information within 90 days of receiving notification, the City is not obligated to include the information in the inventory. The written request to service providers was mailed on February 27, 2007.

State law specifies the type of information that must be provided to the city for the inventory (Sec. 43.053 (e) Texas Local Government Code). According to the statute, information to be provided for the inventory should be based on services and facilities provided during the year preceding the date the city included the area in its Municipal Annexation Plan.

Inventory of Services:

The City of Abilene received one response to the request for information describing services and facilities in the proposed annexation area. The Potosi Water Supply Corporation provided an inventory of existing water lines in the form of a map that has been attached on the following page.

Posting:

Notice of availability of this document was posted in the Abilene Reporter News on August 1, 2007. This document was made available on the City of Abilene website (www.abilenetx.com) on August 1, 2007.

